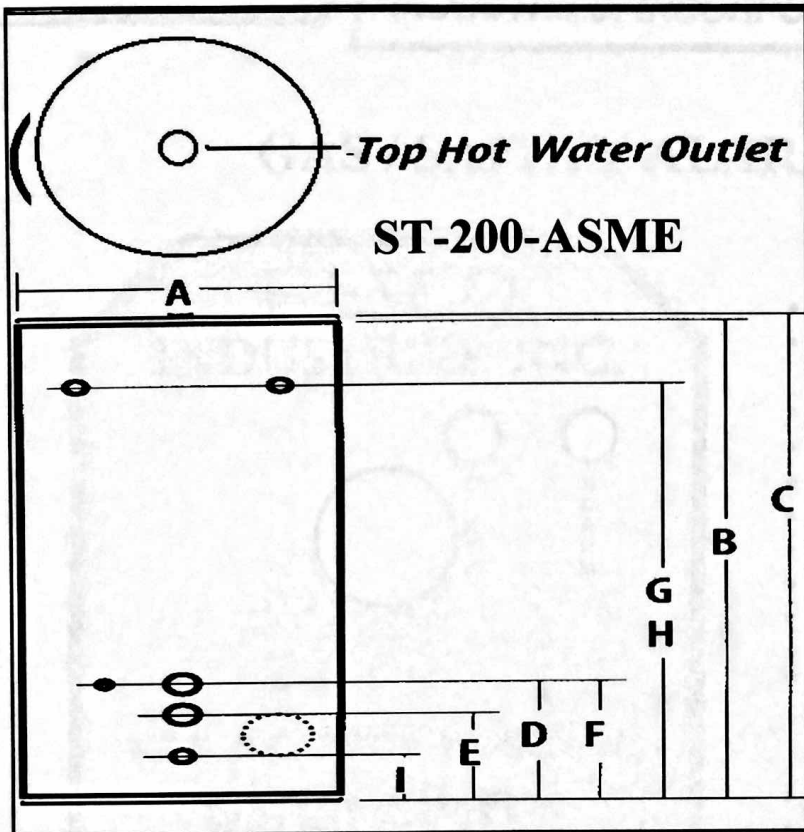
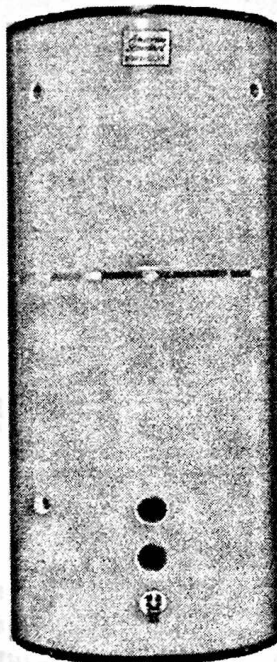


DIMENSIONS [in inches]



MODEL	ST-200-ASME
GALLON Capacity	200
EXTERIOR Dimensions	
A Jacket Diameter	32
B Height To Top Of Tank	78
C Height To Top Hot Water Outlet	79-9/16
D Height to Top Circ. Connection	16-1/4
E Height to Bottom Circ. Connection	11-1/4
F Height to Aquastat Connection	16-1/4
G Height to Thermometer Connection	70-1/4
H Height To T&P Right Side Outlet	70-1/4
I Height To Drain Valve	4-1/2
CONNECTIONS	
Top Hot Water Connection	2-1/2
Circulation Line Connections	2-1/2
Aquastat & Thermometer	3/4
PT Tap Valve	1



COMMERCIAL STORAGE TANK FEATURES

- Heavy Gauge Steel Tank.
- Inner Tank Glasslined
fired at 1600°F for optimum protection from the effects of corrosion
- Two Full Inches Of Non-CFC Energy-Saving Foam Insulation —
reduces fuel cost by maximizing heat retention
- Two Anode Rods To Ensure Longer Tank Life!
- Easy Removal of Sediment & Tank Inspection —
with a full-sized hand-hole clean-out

TESTING & CERTIFICATIONS

- Hesco Commercial Storage Tanks —
are certified at 300 PSI test pressure and 150 PSI working pressure, and all tanks are 100% hydrostatically tested at the factory
- ASME Construction

WARRANTY

- Five year limited warranty on inner glass-lined tank.
- One year limited warranty on all other component parts.