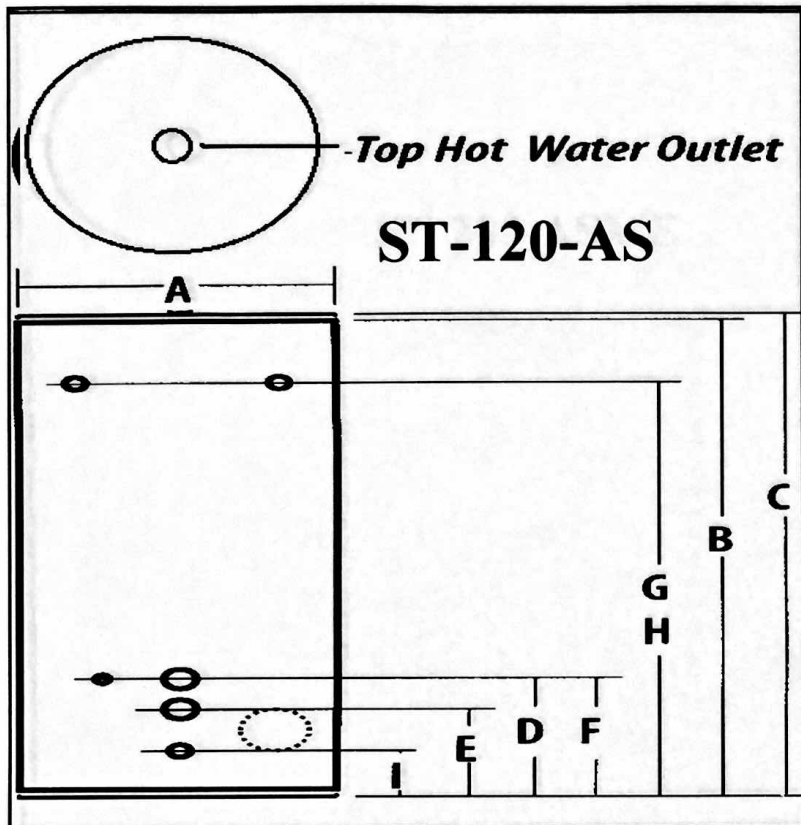
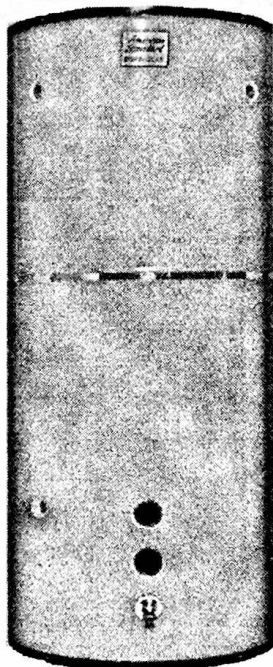


## DIMENSIONS [in inches]



MODEL	ST-120-AS
<b>GALLON Capacity</b>	119
<b>EXTERIOR Dimensions</b>	
A Jacket Diameter	28-1/4
B Height To Top Of Tank	67-7/8
C Height To Top Hot Water Outlet	68
D Height to Top Circ. Connection	16-1/4
E Height to Bottom Circ. Connection	11-1/4
F Height To Aquastat Connection	16-1/4
G Height to Thermometer Connection	60
H Height To T&P Right Side Outlet	60
I Height To Drain Valve	6-1/2
<b>CONNECTIONS</b>	
Top Hot Water Connection	2
Circulation Line Connections	2
Aquastat & Thermometer	3/4
PT Tap Valve	1



### COMMERCIAL STORAGE TANK FEATURES

- Heavy Gauge Steel Tank.
- Inner Tank Glasslined  
*fired at 1600°F for optimum protection from the effects of corrosion*
- Two Full Inches Of Non-CFC Energy-Saving Foam Insulation —  
*reduces fuel cost by maximizing heat retention*
- Two Anode Rods To Ensure Longer Tank Life!
- Easy Removal of Sediment & Tank Inspection —  
*with a full-sized hand-hole clean-out*

### TESTING & CERTIFICATIONS

- Hesco Commercial Storage Tanks —  
*are certified at 300 PSI test pressure and 150 PSI working pressure, and all tanks are 100% hydrostatically tested at the factory*

### WARRANTY

- Five year limited warranty on inner glass-lined tank.
- One year limited warranty on all other component parts.