

# **HESco™**

## **INDUSTRIES, INCORPORATED**

**HEAT ENERGY SYSTEMS**

# **POWER GAS SERIES 120 WATER HEATERS**

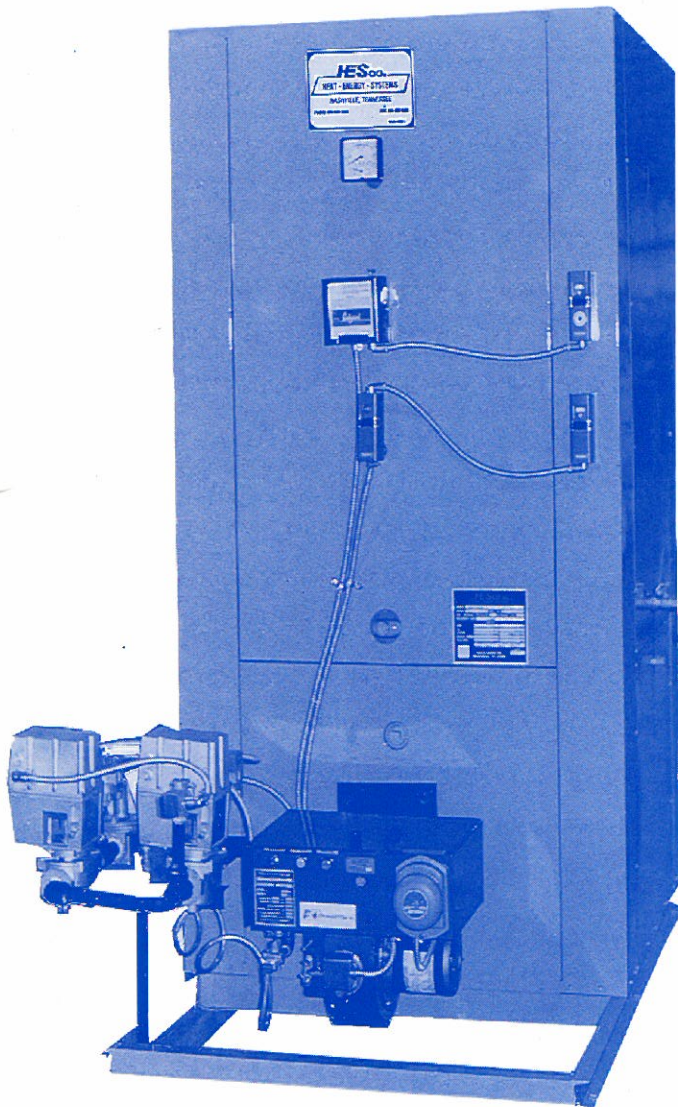
**COMMERCIAL-INSTITUTIONAL-INDUSTRIAL**

### **STANDARD FEATURES**

- ★ Polymerized Epoxy Lined Tank
- ★ Copper Clad Bottom Tube Sheet
- ★ Seamless Copper Clad Fire Tubes
- ★ Minimum 3/4" Thick Tube Sheets
- ★ ASME Code Section IV 125 PSI
- ★ National Board Registered
- ★ Flue Baffles for Maximum Heat Extraction
- ★ Magnesium Anode Rods
- ★ Flue Collector
- ★ Heavy Density Fiberglass Insulation
- ★ 16 Gauge Enamel Steel Jacket
- ★ Power Gas Burner - UL Listed
- ★ Flame Safeguard with Pre-Purge
- ★ ASME Temperature and Pressure Relief Valve
- ★ Probe Type - Low Water Cutoff
- ★ Lower Operating Thermostat
- ★ Upper Operating Thermostat
- ★ High Limit Control w/ Manual Reset
- ★ Sealed Combustion Chamber
- ★ Flame Inspection Port
- ★ Totally Packaged
- ★ Skid Mounted
- ★ Minimum (Two) Hand Hole Cleanouts
- ★ Drain & Drain Valve
- ★ Lifting Lug
- ★ Tank Temperature and Pressure Gauge

### **OPTIONAL ACCESSORIES**

- ★ Oil Fired (Suffix O)
- ★ Gas/Oil Combination (Suffix PGO)
- ★ COPPER CLAD™ Tank Lining=CC
- ★ NICKEL CLAD™ Tank Lining=NC
- ★ Stainless Steel Tank=SS  
(For Deionized Water)
- ★ Post-Purge
- ★ FM Controls
- ★ IRI Controls
- ★ Gas Safety Alarm Monitor
- ★ Side Wall Vent Kit



**AVAILABLE TO 1500 GALLON CAPACITY**

### **POLYMERIZED EPOXY**

A high water resistant polymerized epoxy material. After the tank is completely fabricated from first quality ASME grade steel, the entire tank is lined with two separate applications of polymerized epoxy coating, which is force cured. This coverage offers protection against corrosion and allows smooth tank surfaces to prevent build up of algae and precipitant on the interior tank surfaces. This lining material meets the requirements of the EPA and USDA.



**POWER GAS****SERIES 120****OIL FIRED****PERFORMANCE--SPECIFICATIONS**

MODEL NUMBERS	RECOVERY GPH			1ST HOUR DEL. 40-120	STORAGE US. GAL.	BTUH INPUT X 1000	BURNER MOTOR H.P.	VOLTAGE PHASE HERTZ	APPROX. SHIPPING WEIGHT
	40°F Rise	80°F Rise	100°F Rise						
HN 120 PE 140-PG	348	174	139	257	120	140	1/8	120/1/60	1120
HN 120 PE 200-PG	492	246	197	329	120	200	1/8	120/1/60	1150
HN 120 PE 250-PG	622	312	249	390	120	250	1/8	120/1/60	1200
HN 120 PE 300-PG	738	370	296	448	120	300	1/8	120/1/60	1250
HN 120 PE 350-PG	870	435	349	513	120	350	1/8	120/1/60	1250

Due to continuous product development dimensions are subject to change without notice.

**RECOVERY RATES ARE BASED ON 82 TO 83% FUEL TO WATER EFFICIENCY, HAVING 4 SQ. FT. OF HEAT TRANSFER SURFACE PER BHP. MOST INSTALLATIONS WILL ACHIEVE 83% WITHOUT CREATING CONDENSATE.**

**DIMENSIONS IN INCHES**

NUMBER	A	B	C	D	E	GAS CONN.
HN 120 PE 140 PG	72	35	35	6	15	3/4"
HN 120 PE 200 PG	72	35	35	6	15	3/4"
HN 120 PE 250 PG	72	35	35	6	15	3/4"
HN 120 PE 300 PG	72	35	35	6	15	3/4"
HN 120 PE 350 PG	72	35	35	6	15	3/4"

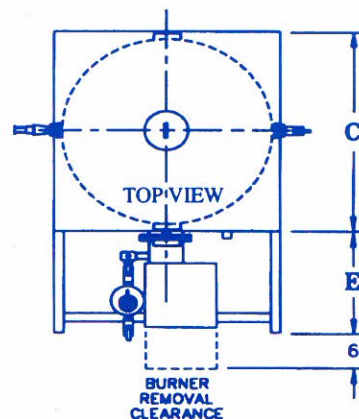
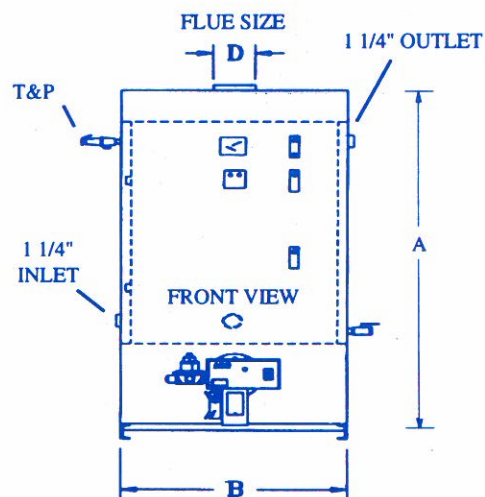
**NOTE: STANDARD GAS PRESSURE REQUIREMENTS:**

Natural Gas 7 - 11 inches w.c. Required @ Heater

Propane Gas - 14 inches w.c. Required @ Heater

Gas trains for higher and lower pressures available.

Consult factory.



**HESCO INDUSTRIES, INC. 513-D LIGON DRIVE  
PHONE 615-242-7600**

**NASHVILLE, TENNESSEE 37204  
FAX 615-255-4405**



**POWER GAS****SERIES 150****OIL FIRED****PERFORMANCE--SPECIFICATIONS**

MODEL NUMBERS	RECOVERY GPH			1ST HOUR DEL. 40-120	STORAGE US. GAL.	BTUH INPUT X 1000	BURNER MOTOR H.P.	VOLTAGE PHASE HERTZ	APPROX. SHIPPING WEIGHT
	40°F Rise	80°F Rise	100°F Rise						
HN 150 PE 140-PG	348	174	139	286	150	140	1/8	120/1/60	1350
HN 150 PE 200-PG	495	246	197	377	150	200	1/8	120/1/60	1350
HN 150 PE 250-PG	622	312	249	419	150	250	1/8	120/1/60	1390
HN 150 PE 300-PG	738	370	296	480	150	300	1/8	120/1/60	1390
HN 150 PE 350-PG	870	435	349	545	150	350	1/8	120/1/60	1550
HN 150 PE 400-PG	985	492	394	596	150	400	1/8	120/1/60	1550
HN 150 PE 500-PG	1230	615	492	719	150	500	1/4	120/1/60	1550

Due to continuous product development dimensions are subject to change without notice.

**RECOVERY RATES ARE BASED ON 82 TO 83% FUEL TO WATER EFFICIENCY, HAVING 4 SQ. FT. OF HEAT TRANSFER SURFACE PER BHP. MOST INSTALLATIONS WILL ACHIEVE 83% WITHOUT CREATING CONDENSATE.**

**DIMENSIONS IN INCHES**

NUMBER	A	B	C	D	E	GAS CONN.
HN 150 PE 140 PG	84	35	35	6	15	3/4"
HN 150 PE 200 PG	84	35	35	6	15	3/4"
HN 150 PE 250 PG	84	35	35	6	15	3/4"
HN 150 PE 300 PG	84	35	35	6	15	3/4"
HN 150 PE 350 PG	84	35	35	6	15	3/4"
HN 150 PE 400 PG	84	35	35	6	15	3/4"
HN 150 PE 500 PG	84	35	35	6	22	1"

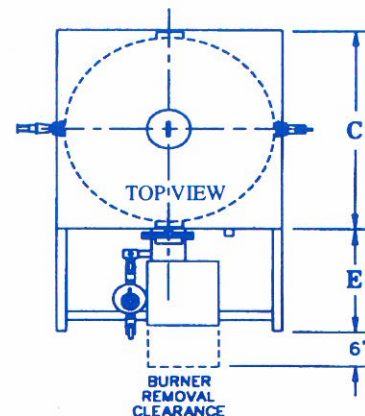
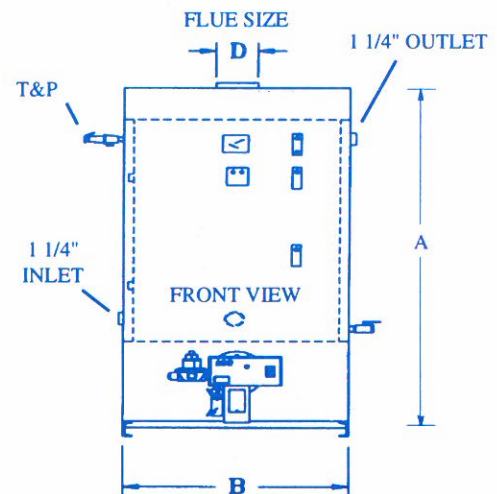
**NOTE: STANDARD GAS PRESSURE REQUIREMENTS:**

Natural Gas 7 - 11 inches w.c. Required @ Heater

Propane Gas - 14 inches w.c. Required @ Heater

Gas trains for higher and lower pressures available.

Consult factory.



**HESCO INDUSTRIES, INC. 513-D LIGON DRIVE  
PHONE 615-242-7600**

**NASHVILLE, TENNESSEE 37204  
FAX 615-255-4405**



**POWER GAS****SERIES 200****OIL FIRED****PERFORMANCE--SPECIFICATIONS**

MODEL NUMBERS	RECOVERY GPH			1ST HOUR DEL. 40-120	STORAGE US. GAL.	BTUH INPUT X 1000	BURNER MOTOR H.P.	VOLTAGE PHASE HERTZ	APPROX. SHIPPING WEIGHT
	40°F Rise	80°F Rise	100°F Rise						
HN 200 PE 140-PG	348	174	139	315	200	140	1/8	120/1/60	1520
HN 200 PE 200-PG	492	246	197	387	200	200	1/8	120/1/60	1520
HN 200 PE 250-PG	622	312	249	453	200	250	1/8	120/1/60	1590
HN 200 PE 300-PG	738	370	296	511	200	300	1/8	120/1/60	1590
HN 200 PE 350-PG	870	435	349	576	200	350	1/8	120/1/60	1670
HN 200 PE 400-PG	985	492	394	622	200	400	1/8	120/1/60	1670
HN 200 PE 600-PG	1476	739	591	869	200	600	1/4	120/1/60	1700

Due to continuous product development dimensions are subject to change without notice.

**RECOVERY RATES ARE BASED ON 82 TO 83% FUEL TO WATER EFFICIENCY, HAVING 4 SQ. FT. OF HEAT TRANSFER SURFACE PER BHP. MOST INSTALLATIONS WILL ACHIEVE 83% WITHOUT CREATING CONDENSATE.**

**DIMENSIONS IN INCHES**

NUMBER	A	B	C	D	E	GAS CONN.
HN 200 PE 140 PG	96	35	35	6	15	3/4"
HN 200 PE 200 PG	96	35	35	6	15	3/4"
HN 200 PE 250 PG	96	35	35	6	15	3/4"
HN 200 PE 300 PG	96	35	35	6	15	3/4"
HN 200 PE 350 PG	96	35	35	6	15	3/4"
HN 200 PE 400 PG	96	35	35	6	15	3/4"
HN 200 PE 600 PG	96	35	35	6	22	1"

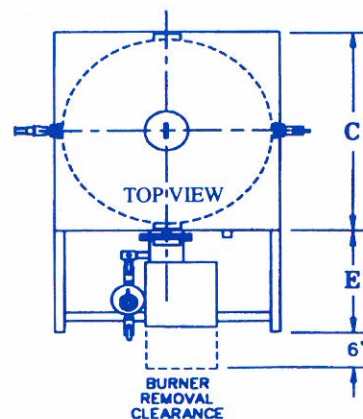
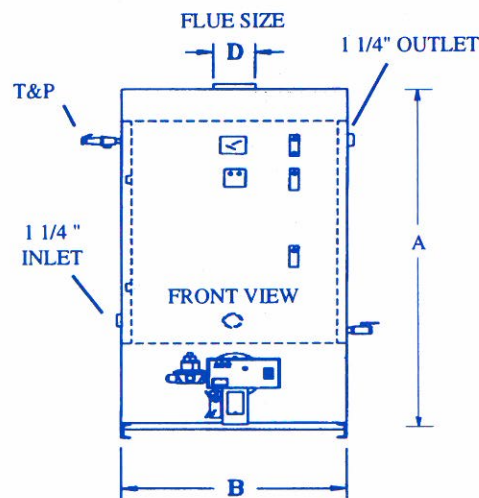
**NOTE: STANDARD GAS PRESSURE REQUIREMENTS:**

Natural Gas 7 - 11 inches w.c. Required @ Heater

Propane Gas - 14 inches w.c. Required @ Heater

Gas trains for higher and lower pressures available.

Consult factory.



**HESCO INDUSTRIES, INC.**

**513-D LIGON DRIVE**

**PHONE 615-242-7600**

**NASHVILLE, TENNESSEE 37204**

**FAX 615-255-4405**



**POWER GAS****SERIES 250****OIL FIRED****PERFORMANCE--SPECIFICATIONS**

MODEL NUMBERS	RECOVERY GPH			1ST HOUR DEL. 40-120	STORAGE US. GAL.	BTUH INPUT	BURNER MOTOR H.P.	VOLTAGE PHASE HERTZ	APPROX. SHIPPING WEIGHT
	40°F Rise	80°F Rise	100°F Rise						
HN 250 PE 200-PG	492	246	197	416	250	200,000	1/8	120/1/60	1950
HN 250 PE 300-PG	738	370	296	540	250	300,000	1/8	120/1/60	1950
HN 250 PE 400-PG	985	492	394	662	250	400,000	1/8	120/1/60	1950
HN 250 PE 500-PG	1230	615	492	785	250	500,000	1/4	120/1/60	1950
HN 250 PE 600-PG	1476	739	591	901	250	600,000	1/4	120/1/60	2100
HN 250 PE 700-PG	1722	861	689	1018	250	700,000	1/4	120/1/60	2250
HN 250 PE 800-PG	1970	985	788	1147	250	800,000	1/3	120/1/60	2250

Due to continuous product development dimensions are subject to change without notice.

**RECOVERY RATES ARE BASED ON 82 TO 83% FUEL TO WATER EFFICIENCY, HAVING 4 SQ. FT. OF HEAT TRANSFER SURFACE PER BHP. MOST INSTALLATIONS WILL ACHIEVE 83% WITHOUT CREATING CONDENSATE.**

**DIMENSIONS IN INCHES**

NUMBER	A	B	C	D	E	GAS CONN.
HN 250 PE 200 PG	84	43	43	6	15	3/4"
HN 250 PE 300 PG	84	43	43	6	15	3/4"
HN 250 PE 400 PG	84	43	43	6	15	3/4"
HN 250 PE 500 PG	84	43	43	6	22	1"
HN 250 PE 600 PG	84	43	43	6	22	1"
HN 250 PE 700 PG	84	43	43	6	22	1"
HN 250 PE 800 PG	84	43	43	8	22	1"

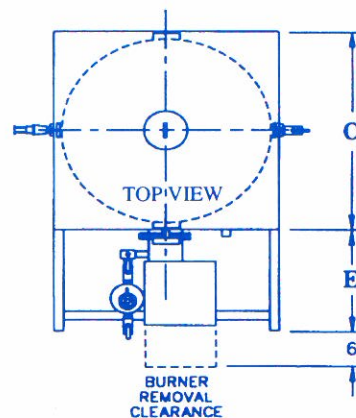
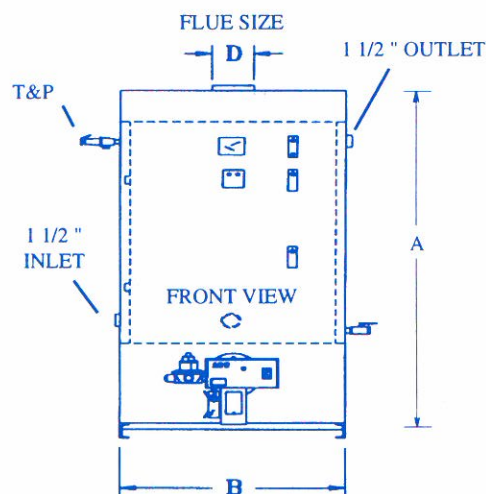
**NOTE: STANDARD GAS PRESSURE REQUIREMENTS:**

Natural Gas 7 - 11 inches w.c. Required @ Heater

Propane Gas - 14 inches w.c. Required @ Heater

Gas trains for higher and lower pressures available.

Consult factory.



**HESCO INDUSTRIES, INC. 513-D LIGON DRIVE  
PHONE 615-242-7600**

**NASHVILLE, TENNESSEE 37204  
FAX 615-255-4405**



**POWER GAS****SERIES 300****OIL FIRED****PERFORMANCE--SPECIFICATIONS**

MODEL NUMBERS	RECOVERY GPH			1ST HOUR DEL. 40-120	STORAGE US. GAL.	BTUH INPUT	BURNER MOTOR H.P.	VOLTAGE PHASE HERTZ	APPROX. SHIPPING WEIGHT
	40°F Rise	80°F Rise	100°F Rise						
HN 300 PE 200-PG	492	246	197	459	300	200,000	1/8	120/1/60	2000
HN 300 PE 300-PG	738	370	296	583	300	300,000	1/8	120/1/60	2000
HN 300 PE 400-PG	985	492	394	705	300	400,000	1/8	120/1/60	2000
HN 300 PE 500-PG	1230	615	492	828	300	500,000	1/4	120/1/60	2000
HN 300 PE 600-PG	1476	739	591	943	300	600,000	1/4	120/1/60	2400
HN 300 PE 800-PG	1970	985	788	1189	300	800,000	1/3	120/1/60	2400
HN 300 PE 1000-PG	2460	1231	985	1435	300	1,000,000	1/3	120/1/60	2550

Due to continuous product development dimensions are subject to change without notice.

**RECOVERY RATES ARE BASED ON 82 TO 83% FUEL TO WATER EFFICIENCY, HAVING 4 SQ. FT. OF HEAT TRANSFER SURFACE PER BHP. MOST INSTALLATIONS WILL ACHIEVE 83% WITHOUT CREATING CONDENSATE.**

**DIMENSIONS IN INCHES**

NUMBER	A	B	C	D	E	GAS CONN.
HN 300 PE 200 PG	96	43	43	6	15	3/4"
HN 300 PE 300 PG	96	43	43	6	15	3/4"
HN 300 PE 400 PG	96	43	43	6	15	3/4"
HN 300 PE 500 PG	96	43	43	6	22	1"
HN 300 PE 600 PG	96	43	43	6	22	1"
HN 300 PE 800 PG	96	43	43	8	22	1"
HN 300 PE 1000 PG	96	43	43	8	22	1 1/4"

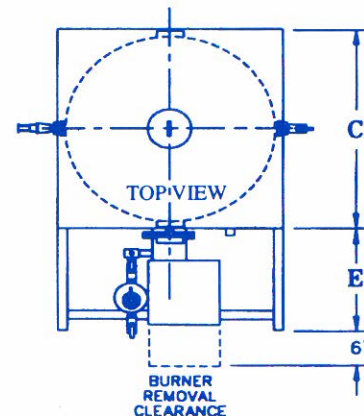
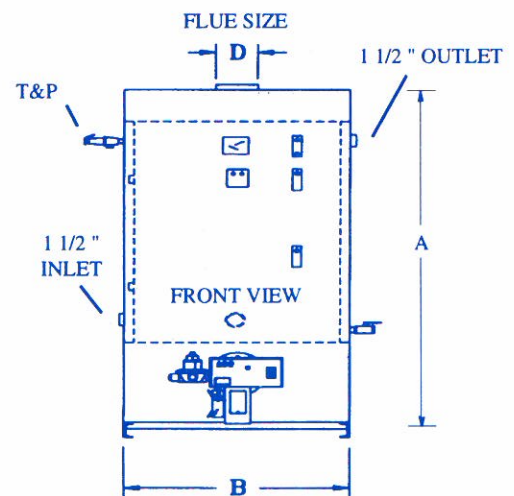
**NOTE: STANDARD GAS PRESSURE REQUIREMENTS:**

Natural Gas 7 - 11 inches w.c. Required @ Heater

Propane Gas - 14 inches w.c. Required @ Heater

Gas trains for higher and lower pressures available.

Consult factory.



**HESCO INDUSTRIES, INC. 513-D LIGON DRIVE  
PHONE 615-242-7600**

**NASHVILLE, TENNESSEE 37204  
FAX 615-255-4405**



**POWER GAS****SERIES 400****OIL FIRED****PERFORMANCE--SPECIFICATIONS**

MODEL NUMBERS	RECOVERY GPH			1ST HOUR DEL. 40-120	STORAGE US. GAL.	BTUH INPUT	BURNER MOTOR H.P.	VOLTAGE PHASE HERTZ	APPROX. SHIPPING WEIGHT
	40°F Rise	80°F Rise	100°F Rise						
HN 400 PE 400-PG	985	492	394	799	400	400,000	1/8	120/1/60	2600
HN 400 PE 600-PG	1476	739	591	1046	400	600,000	1/4	120/1/60	2600
HN 400 PE 800-PG	1970	985	788	1292	400	800,000	1/3	120/1/60	2600
HN 400 PE 1000-PG	2460	1231	985	1531	400	1,000,000	1/3	120/1/60	2750
HN 400 PE 1200-PG	2953	1477	1182	1757	400	1,200,000	1/3	120/1/60	3150
HN 400 PE 1400-PG	3445	1723	1379	2003	400	1,400,000	1/3	120/1/60	3150
HN 400 PE 1600-PG	3936	1968	1575	2248	400	1,600,000	1/3	120/1/60	3150

Due to continuous product development dimensions are subject to change without notice.

**RECOVERY RATES ARE BASED ON 82 TO 83% FUEL TO WATER EFFICIENCY, HAVING 4 SQ. FT. OF HEAT TRANSFER SURFACE PER BHP. MOST INSTALLATIONS WILL ACHIEVE 83% WITHOUT CREATING CONDENSATE.**

**DIMENSIONS IN INCHES**

NUMBER	A	B	C	D	E	GAS CONN.
HN 400 PE 400 PG	96	50	50	6	15	3/4"
HN 400 PE 600 PG	96	50	50	6	22	1"
HN 400 PE 800 PG	96	50	50	8	22	1"
HN 400 PE 1000 PG	96	50	50	8	22	1 1/4"
HN 400 PE 1200 PG	96	50	50	8	22	1 1/4"
HN 400 PE 1400 PG	96	50	50	10	26	1 1/2"
HN 400 PE 1600 PG	96	50	50	10	26	1 1/2"

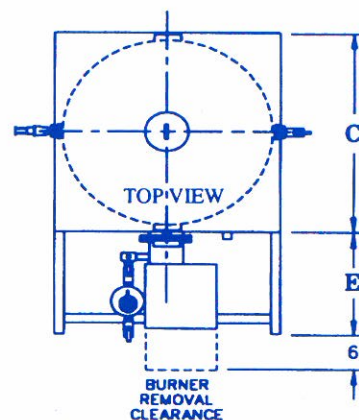
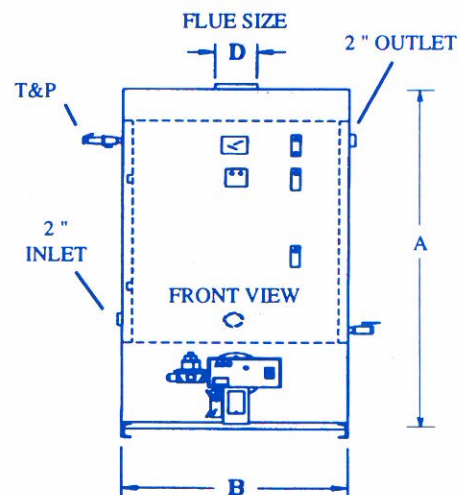
**NOTE: STANDARD GAS PRESSURE REQUIREMENTS:**

Natural Gas 7 - 11 inches w.c. Required @ Heater

Propane Gas - 14 inches w.c. Required @ Heater

Gas trains for higher and lower pressures available.

Consult factory.



**HESCO INDUSTRIES, INC.**

**513-D LIGON DRIVE**

**PHONE 615-242-7600**

**NASHVILLE, TENNESSEE 37204**

**FAX 615-255-4405**