

HESco™ **INDUSTRIES, INCORPORATED**

HEAT ENERGY SYSTEMS

STORAGE TANKS

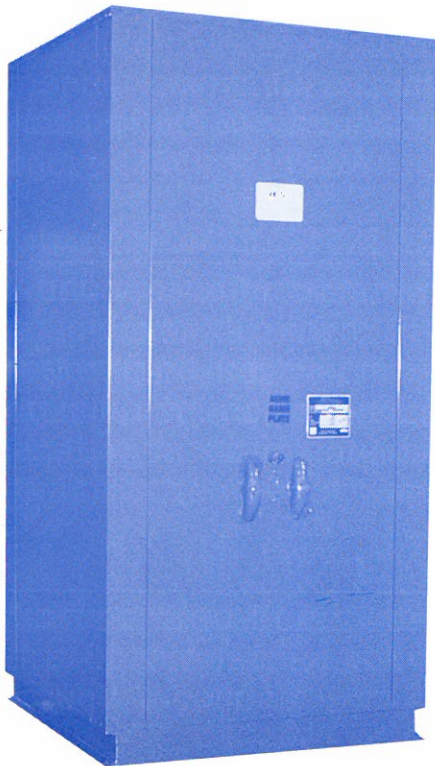
FACTORY INSULATED

ENERGY EFFICIENCY

Ashrae 90.1b - 1992

With energy costs continuing to rise, energy consuming equipment must be made as efficient as possible. This is especially important because new and more stringent conservation and efficiency standards are being proposed and adopted regularly.

The principal heat losses, which reduce overall efficiency, are radiant losses from the pressure vessel and its flanges. At the factory, we insulate each tank and enclose it with a steel jacket to reduce these radiant losses to less than 4 watts per square foot of tank surface.



STANDARD FEATURES

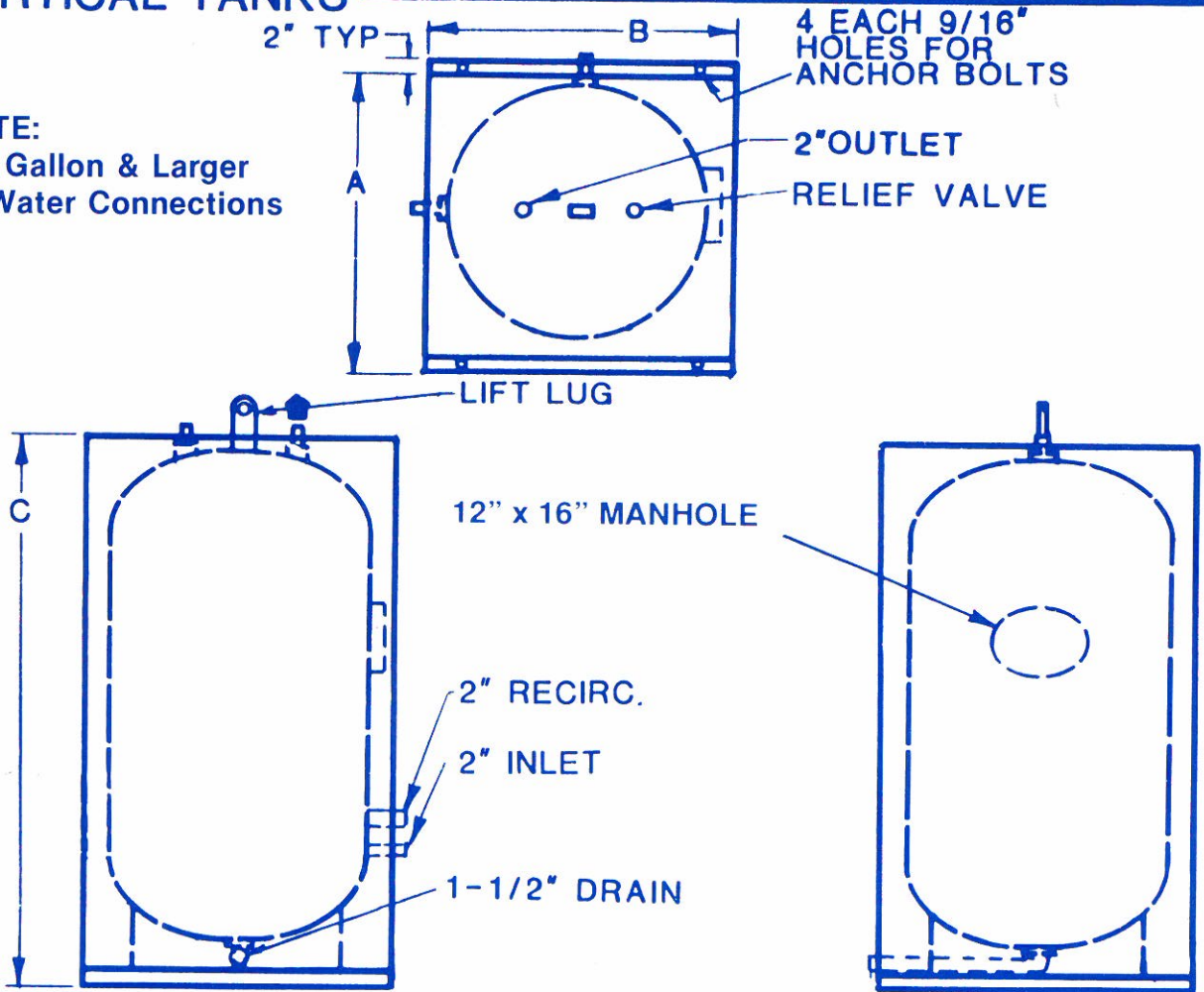
- Polymerized Epoxy Tank Lining
- 16 Gauge Enamel Steel Jacket
- Heavy Density Fiberglass Insulation
- 12 x 16 Manway
- ASME Stamped for 125 PSI
- National Board Stamped
- Blowdown Drain Connection

OPTIONAL ACCESSORIES

- Copper Clad Tank lining
- Cement Tank lining
- Nickel Clad Tank lining
- ASME Stamped 150 PSI working pressure
- Automatic Reset Expansion Control
- Tank temperature gauge
- Tank pressure gauge
- Drain Valve
- Copper Clad Openings
- Flanged Openings

STORAGE VERTICAL TANKS

NOTE:
500 Gallon & Larger
3" Water Connections

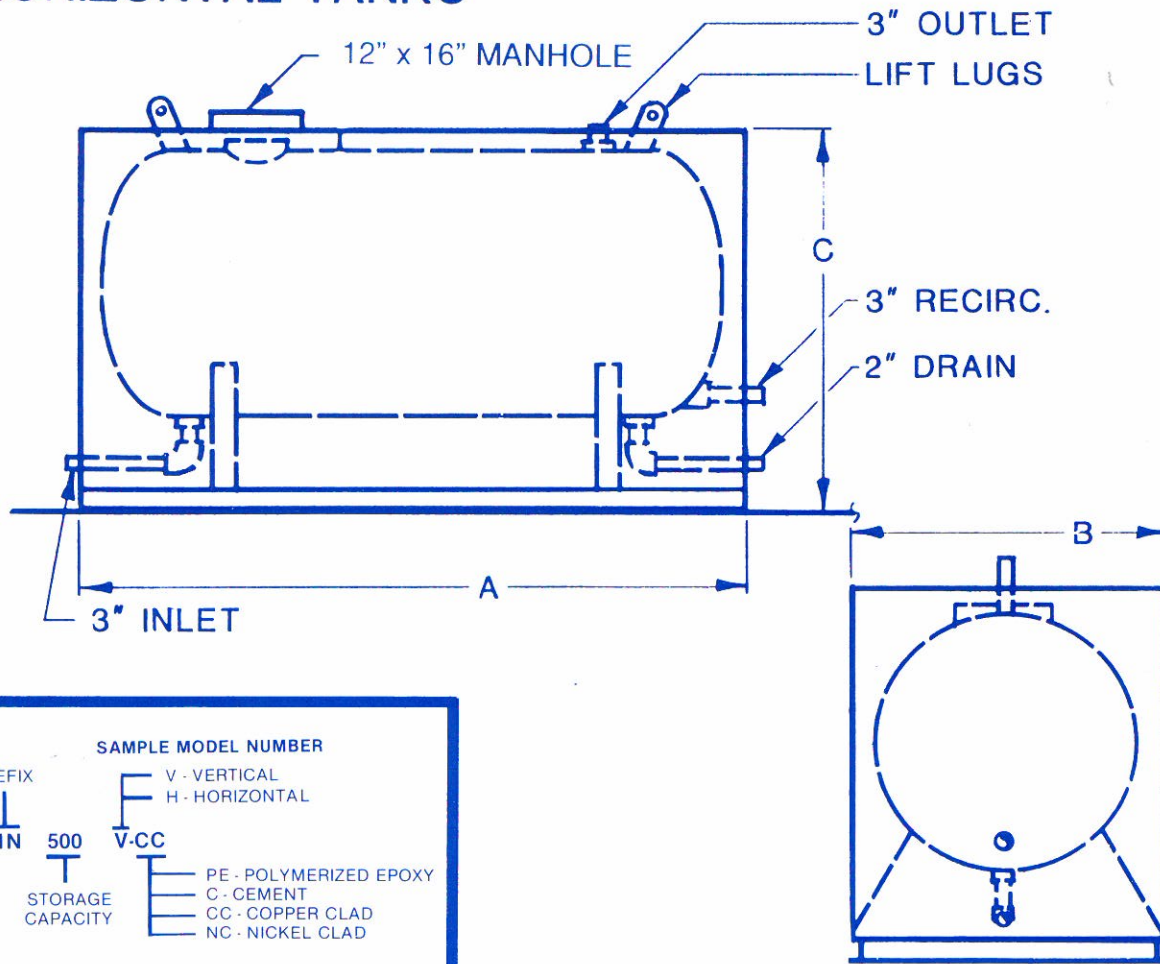


HESCO

Model	Gallons Storage	Overall Dimensions			Vessel Diameter	Shipping Weight in lbs.	
		Length A	Width B	Height C		Cement	Std.
HN 150V	150	34"	34"	65"	30"	1500	900
HN 200V	200	34"	34"	83"	30"	1800	1000
HN 250V	250	40"	40"	71"	36"	2100	1150
HN 300V	300	40"	40"	83"	36"	2300	1250
HN 350V	350	40"	40"	95"	36"	2400	1350
HN 400V	400	46"	46"	87"	42"	2800	1500
HN 500V	500	46"	46"	105"	42"	3100	2000
HN 600V	600	52"	52"	98"	48"	3400	2500
HN 750V	750	52"	52"	107"	48"	4000	3000
HN1000V	1000	64"	64"	107"	60"	5300	4200

FOOTNOTE: The tabular data and dimensions shown in this bulletin are correct at the time of this printing. Occasionally, product development may change the accuracy of this data. Please refer to the data shown on individual heater drawings for the most current information.

STORAGE HORIZONTAL TANKS



SAMPLE MODEL NUMBER

PREFIX
HN

STORAGE CAPACITY
500

V - VERTICAL
H - HORIZONTAL
V-CC

PE - POLYMERIZED EPOXY
C - CEMENT
CC - COPPER CLAD
NC - NICKEL CLAD

HESCO

Model	Gallons Storage	Overall Dimensions			Vessel Diameter	Shipping Weight in lbs.	
		Length A	Width B	Height C		Std.	Cement
HN 500H	500	94"	46"	56"	42"	2100	3,000
HN 750H	750	106"	52"	62"	48"	3200	4,160
HN1000H	1000	141"	52"	62"	48"	4400	5,825
HN1250H	1250	173"	52"	62"	48"	4700	6,100
HN1500H	1500	168"	58"	68"	54"	5700	7,200
HN1750H	1750	194"	58"	68"	54"	6700	8,300
HN2000H	2000	177"	64"	70"	60"	8700	9,700
HN2250H	2250	198"	64"	70"	60"	8700	10,600
HN2500H	2500	219"	64"	70"	60"	9300	11,400

DIMENSIONS, LOCATION OF OPENINGS AND STORAGE CAPACITY ON THIS SPECIFICATION SHEET ARE TO SIMPLIFY THE SELECTION OF EQUIPMENT; LARGER OR SMALLER SIZES ARE AVAILABLE UPON REQUEST. PLEASE CONTACT YOUR HESCO REPRESENTATIVE FOR SPECIFIC INFORMATION.